



GMT MONTHLY MEMBERSHIP PROGRESS REPORT

Results as of: 2/29/2020

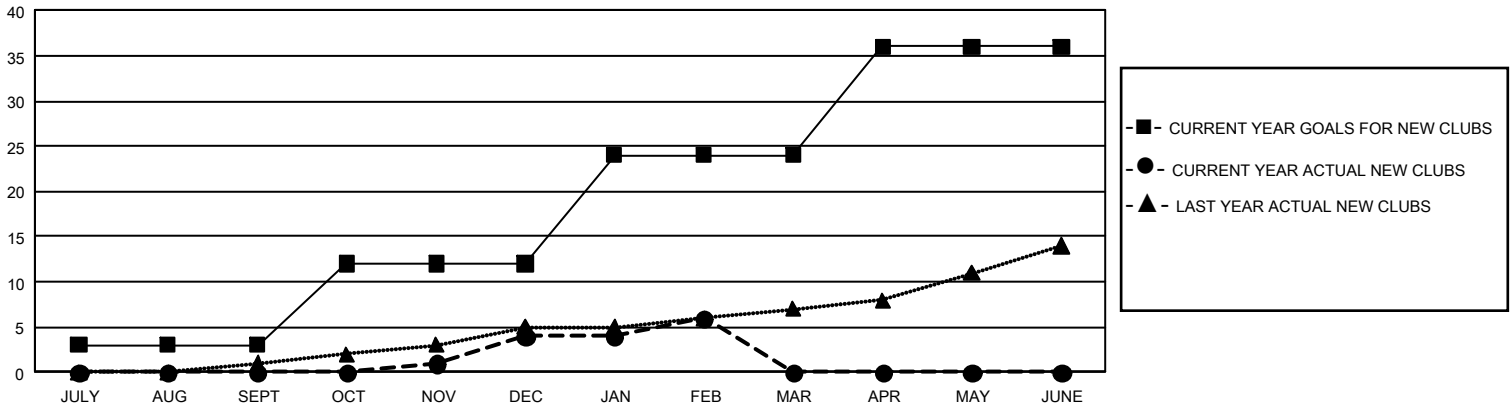
GMT Constitutional Area 4, Group D

GMT: OPEN

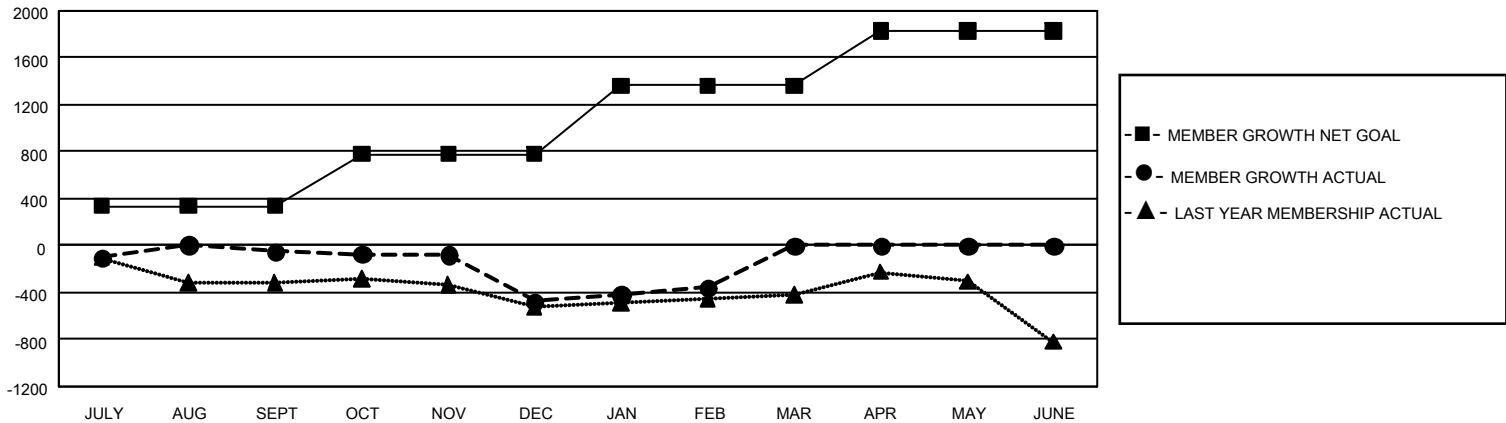
REPORT DOES NOT INCLUDE CLUBS IN UNDISTRICTED AREAS.

Clubs				Members			
RESULTS FOR 2019-2020				RESULTS FOR 2019-2020			
QUARTER	NEW CLUB GOAL	NEW CLUBS	DROPPED CLUBS	QUARTER	MEMBER GROWTH NET GOAL	MEMBER GROWTH ACTUAL	DROPPED MEMBERS ACTUAL (including transfers)
JULY/AUG/SEPT	9	0	6	JULY/AUG/SEPT	1,002	576	572
OCT/NOV/DEC	27	4	9	OCT/NOV/DEC	1,341	586	939
JAN/FEB/MAR	36	2	10	JAN/FEB/MAR	1,743	473	288
APR/MAY/JUNE	36	0	0	APR/MAY/JUNE	1,404	0	0

GOALS AND ACTUAL NEW CLUBS CUMULATIVE



GOALS AND ACTUAL MEMBERS CUMULATIVE



DROPPED CLUBS: 25	617 CLUBS OF 1,491 ADDED 1 OR MORE NEW MEMBERS	<u>GENDER DISTRIBUTION</u> MALE 21,804 (70.27%) FEMALE 9,227 (29.73%)
<u>DROPPED MEMBERS</u> DECEASED 171 CLUB CANCELLED 95 OTHER 1,534 <hr/> TOTAL 1,800	CLICK HERE FOR CUMULATIVE MEMBERSHIP DATA	TOTAL FAMILY UNIT MEMBERS 2,869 FAMILY MEMBERS PAYING HALF DUES 1,466